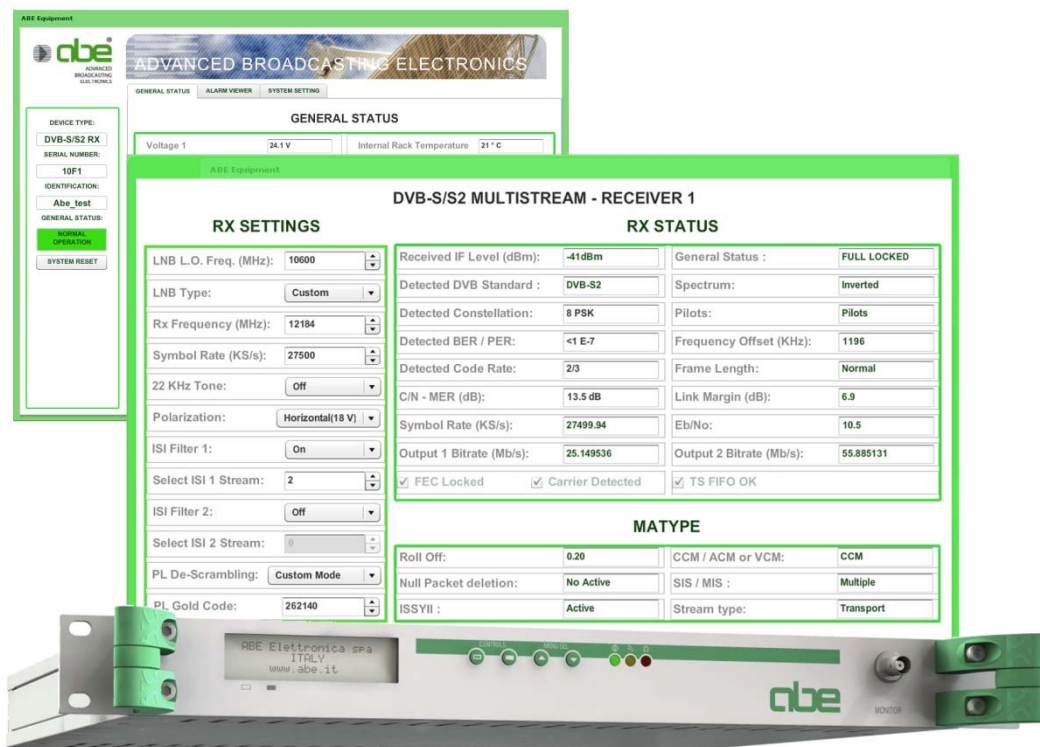


DVB-S/S2 MULTISTREAM RECEIVER - DESCRAMBLER

The high quality, professional and cost-effective solution



The “**RXS 1000**” is a DVB-S/S2 Multistream Receiver: a high quality, professional, flexible and really cost-effective solution to demodulate a DVB-S/S2 signal.

Applications

- Satellite Receiver/Demodulator for Contribution and Distribution
- Digital Microwave Link Receiver/Demodulator

Main Features

- Compliant to **DVB-S** standard ETSI EN 300 421
- Compliant to **DVB-S2** standard ETSI EN 302 307 for **Broadcast** and **DSNG** applications
- Supports all modulation schemes (standard: QPSK and 8PSK; option: 16APSK and 32APSK)
- Up to 6 different ASI Transport Stream outputs
- ASI output monitoring switcher (also usable for n+1 configurations) - soon available option

- Supports **Multistream** mode with the optional capability to filter two streams per receiver
- Up to 4 CAM Slots for Transport Stream decryption
- PL (Physical Layer) de-scrambler
- BISS 1/E decryption support (soon available option)
- Symbol Rate up to 45MS/s (38MS/s for 32APSK modulation scheme)
- Wide dynamic IF “L” Band input level range (-10 to -80dBm)
- Adaptive equalization
- User - friendly local control with front panel LCD display and keypad
- RS485; Ethernet 10/100 Base-T (SNMP and web server support) remote control interface option.
- Single or Double (redundant) Power Supply (soon available option)
- Stand-Alone Unit 19” 1U high.

DVB-S/S2 Multistream Receiver Board

RECEIVER SPECIFICATIONS

Modulation schemes and reference standards:	QPSK, 8PSK (EN300 421 DVB-S and EN 302 307 DVB-S2 for Broadcast and DSNG) Option: 16APSK, 32APSK (EN 302 307 DVB-S2 for Broadcast and DSNG)
Inputs:	Single or double input tuner (according to hardware options) Tuners can be connected as follows: <ul style="list-style-type: none"> • Single tuner with "L" Band input and output connectors (loop through) (*) • Double tuner with "L" Band input and output connectors (loop through) • Double tuner with two separate "L" Band input connectors <p>(*) - This is the standard configuration normally available; other configurations on request and subject to minimum ordering quantity.</p>
IF ("L" Band) input frequency:	950 to 2,150MHz
IF ("L" Band) input level:	-10 to -80dBm
Input impedance and connector:	75 Ω "F" socket (option: SMA)
Symbol Rate:	1 to 45MS/s (38MS/s for 32APSK modulation scheme)
Multistream (MIS) filtering:	Supported with ISI value selection
LNB Power Supply and Control:	0V (off) or 13V (vertical polarization) or 18V (horizontal polarization) – 350mA max. 22KHz tone (on/off for High /Low band control)
Baseband Shaping (roll-off):	20% - 25% - 35% according to the standard
Maximum output bit rate:	Over 100Mbit/s

Decryption Options

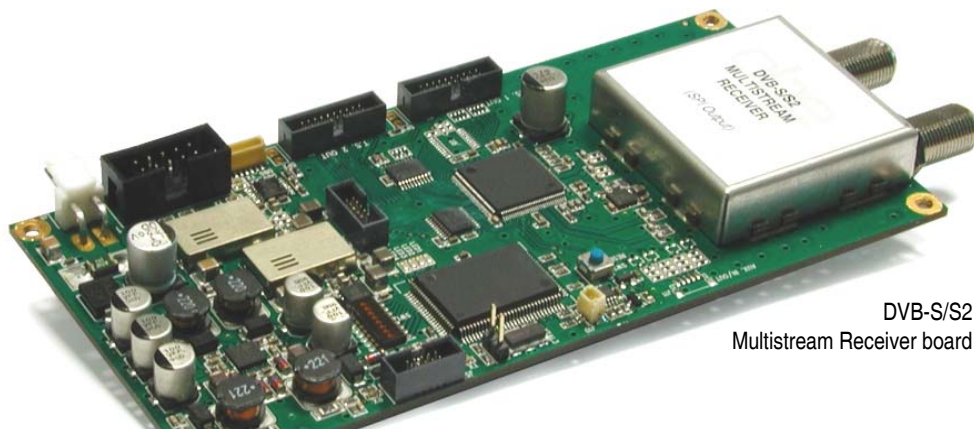
CAM SLOT MODULES (Option)

Reference Standard:	EN50221
Interface:	PCMCIA DVB-CI Common Interface
CAS Support:	Professional Multiprogram CAM (up to 24 Elementary Stream descrambling)
PL (Physical Layer) de-scrambler	
PL de-scrambler:	Supported with Gold Code setting
BISS 1/E (soon available option)	
BISS 1/E decryption:	Supported

Output interface

ASI

Reference Standard:	ASI-C MPEG ISO / IEC 13818-1
Output impedance and connector:	75 Ω "BNC" socket

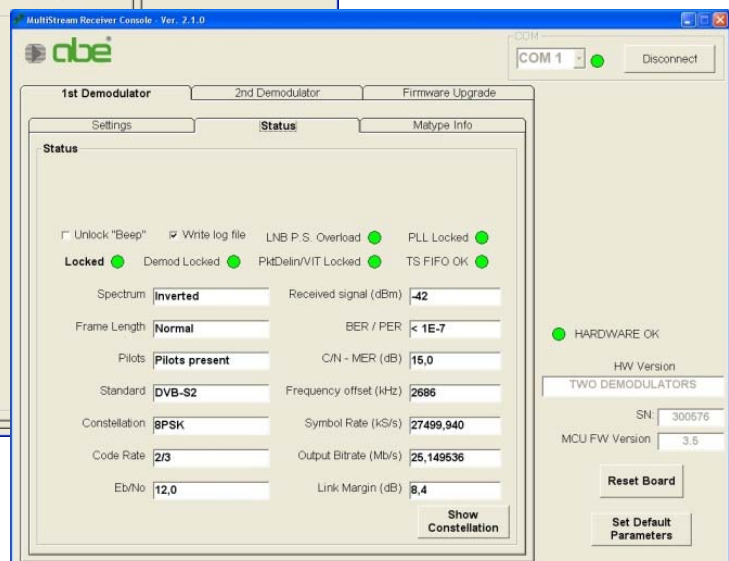
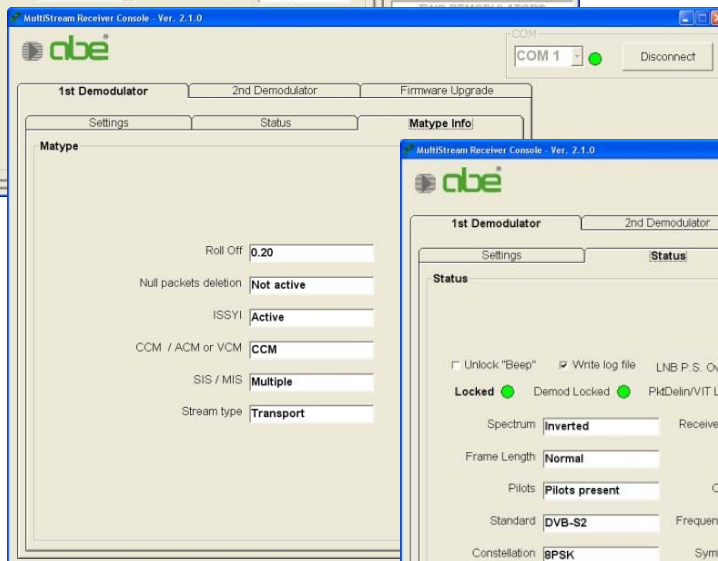
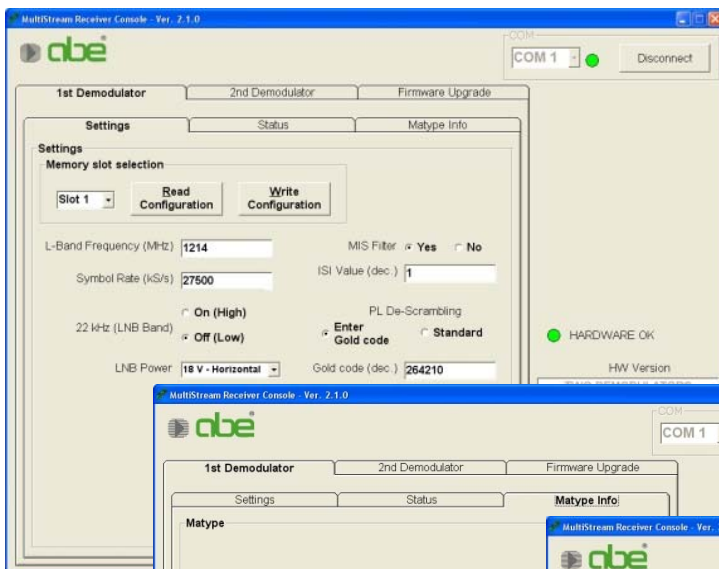
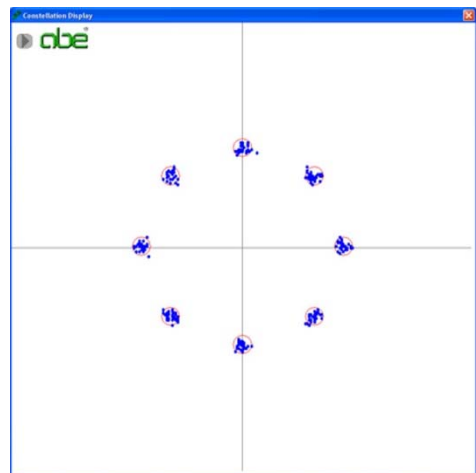


DVB-S/S2
Multistream Receiver board

General Specifications

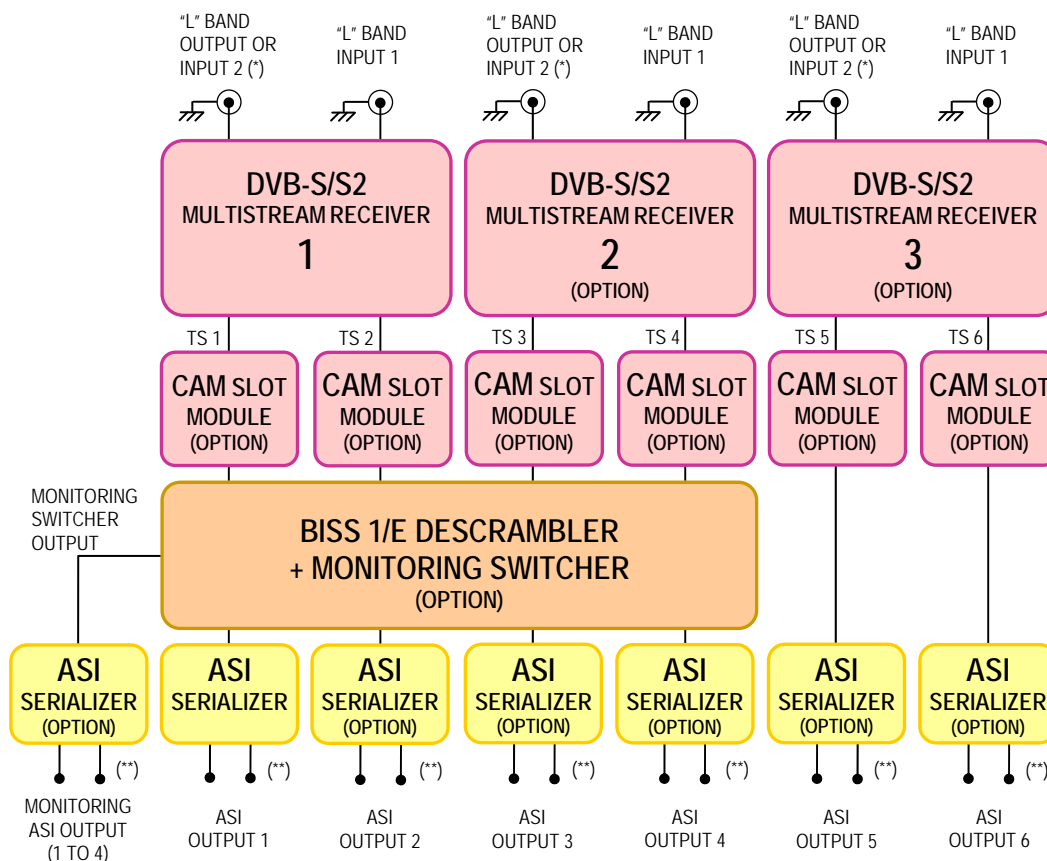
Power supply:	85 to 264Vac 50/60 Hz Soon available options: Double (redundant) power supply; D.C. power supply (36 to 72V input)
Remote control interface options:	RS485; Ethernet 10/100 Base-T (SNMP and web server support)
Housing:	Rack drawer 19" 1U
Operating temperature range:	0 to 45° C.

A screenshot of the Constellation Diagram from the Multistream Receiver serial (RS232) control software



Screenshots of the Multistream Receiver serial (RS232) control software

RXS 1000 Series DVB-S/S2 Multistream Receiver-Descrambler general block diagram



HARDWARE CONFIGURATION LIMITATIONS:

- Maximum number of ASI (BNC) outputs: 8
- Maximum number of DVBS-S2 receivers: 3
- Maximum number of CAM SLOT Modules: 4
- Maximum total number of Receivers+CAM Slots: 6

(*) – ACCORDING TO BOARD HARDWARE CONFIGURATION

(**) – Optional 2nd ASI (replicated) output

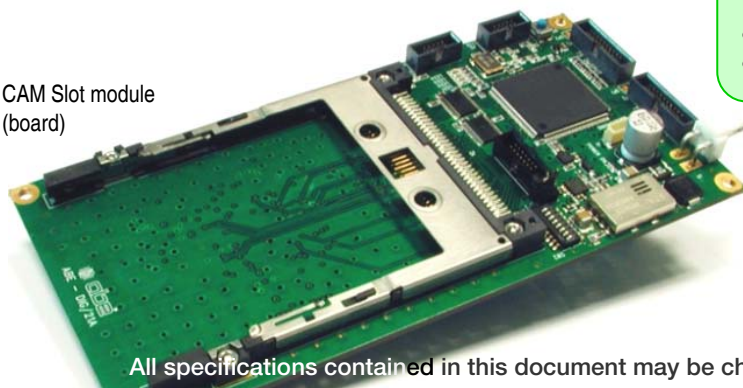
Main available options:

- Up to 3 DVB-S/S2 Multistream Receivers
- Up to 6 ASI Transport Stream outputs
- Up to 4 CAM Slot modules

Soon available options:

- BISS 1/E descrambler
- ASI output monitoring switcher (also usable for n+1 configurations)
- Double (redundant) power supply
- D.C. power supply

CAM Slot module
(board)



All specifications contained in this document may be changed without prior notice.